

**HYDRAULICALLY OPERATED, SHEAR AND SEAL REVOLUTION VALVE, DESIGNED WITH HIGH CUTTING PERFORMANCE AND RELIABLE POST-CUT SEALING.**

**Features:**

- ▷ Unidirectional valve with pump-through capability
- ▷ Separate cutting and sealing components in a single device
- ▷ Compact & lightweight design
- ▷ Suitable for In-Riser Landing String, Open Water Intervention and Well Abandonment applications
- ▷ Fully validated to API 17G 3<sup>rd</sup> Edition

**DESIGN DATA**

Nominal Bore Diameter	7-3/8" (187.3 mm)
Design Pressure	Working: 10,000 psi (68.9 MPa) Test: 15,000 psi (103.4 MPa)
Design Standard	API 6A 21 <sup>st</sup> Edition 2018 (ISO 10423), API 17G 3 <sup>rd</sup> Edition 2019 (ISO 13628-7), NACE MR0175 2015 (ISO 15156)
Temperature Class (Design)	API 6A Class U (0°F to 250°F / -18°C to +121°C)
Service	CO <sub>2</sub> , H <sub>2</sub> S (NACE MR0175 / ISO 15156)
Material Class	EE
Product Specification Level	PSL 3G
Design Validation Level	API 17G 3 <sup>rd</sup> Edition SSL-Gas (Fully compliant)
Shear Class	Wireline / Coiled Tubing Shear and Seal

**PERFORMANCE DATA**

Maximum Hydraulic Pressure	10,000 psi (68.9 MPa)
Actuator Volume (Total, Approx.)	0.37 U.S. gallons (1.40 Litres)
Acceptable Hydraulic Fluid	Any water or oil-based control fluid
Wireline Cutting Capabilities	All common slickline, e-line and braided cable grades
Coiled Tubing Cutting Capabilities	<u>Tested</u> 1.75" OD x 0.156" WT, QT-1000 Coiled Tubing c/w 15/32" plow-steel braided wire <u>Indicative Predicted</u> 2.375" x 0.145" wall thickness, QT-1100 Coiled Tubing 2.375" x 0.156" wall thickness, QT-1100 Coiled Tubing 2.375" x 0.175" wall thickness, QT-900 Coiled Tubing

**WEIGHT AND DIMENSIONS**

Overall Height (Nominal)	19.75" (502 mm)
Overall Diameter (Nominal)	18.625" (473 mm)
Gross Dry Weight (Approx.)	1,229 lbs (557.5 kg)

**VALVE INTERFACES**

Design Standard	API 17G 3 <sup>rd</sup> Edition.
Upper End Connection	Interventek 7.375" Studded Flange
Lower End Connection	Interventek 7.375" Studded Flange
Hydraulic Interface (Flange)	Valve Open: 9/16" MP Autoclave
	Valve Close: 9/16" MP Autoclave

## FUNCTIONAL CAPACITIES

Maximum Tension @ RWP	440 kip
Maximum Moment @ RWP	134 ft kip
Maximum Tension @ 0 ksi	1,237 kip
Maximum Moment @ 0 ksi	377 ft kip

Note that these values are the limiting values, if GRA is conducted then greater localized values may be available

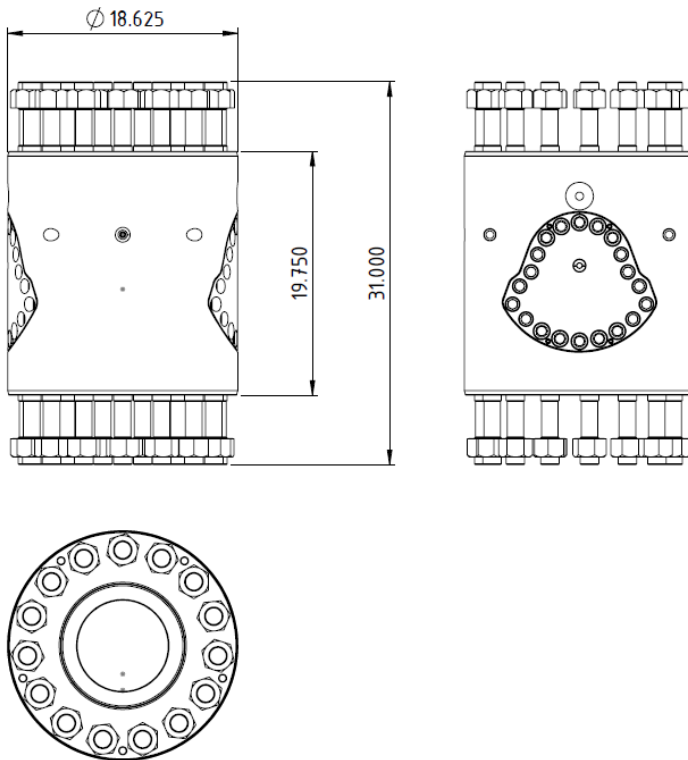
## VALIDATION LEVEL

Service Specification Level	API 17G SSL-Gas
Temperature Class (Operational)	27°F to 250°F / -3°C to +121°C
Design Water Depth (Max)	10,000 ft (3,048 m)
Shearing	API 17G Shear and Seal Class

## NOTES

Structural validation testing fully compliant with API 17G 3<sup>rd</sup> Edition – Annex E  
Validation testing of valve is fully compliant with API 17G 3<sup>rd</sup> Edition – Annex G  
This valve is not designed with differential pressure breakout capability

## PRODUCT LAYOUT DRAWING



The information in this document is uncontrolled and subject to change without notice.

**CONTACT US:** Interventek Subsea Engineering Ltd.

Unit 4 International View, ABZ Business Park, Dyce, ABERDEEN AB21 0BJ

  +44 (0)1224 518 509 [enquiries@interventek.com](mailto:enquiries@interventek.com) [www.interventek.com](http://www.interventek.com)

