



HYDRAULICALLY OPERATED, COMPACT, S5TT ISOLATION BALL VALVE DESIGNED WITH BIDIRECTIONAL SEALING AND STRIP THROUGH CAPABILITY.

Features:

- ▷ Bidirectional Ball Valve with strip through capability
- ▷ Compact & lightweight design
- ▷ Pump through capability
- ▷ Latch connection interface
- ▷ Fully validated structural connections
- ▷ Full validated to API 17G 3rd Edition

DESIGN DATA

Nominal Bore Diameter	7-1/16" (179.3 mm)
Design Pressure	Working: 10,000 psi (69.0 MPa) Test: 15,000 psi (103.5 MPa)
Ball Pressure	Above: 5,000 psi (34.4 MPa) Below: 10,000 psi (69.0 MPa)
Design Standard	API 6A 21 st Edition 2018 (ISO 10423), API 17G 3 rd Edition 2019 (ISO 13628-7), NACE MR0175 2015 (ISO 15156)
Temperature Class (Design)	API 6A Class U (0°F to 250°F / -18°C to +121°C)
Service	CO ₂ , H ₂ S (NACE MR0175 / ISO 15156)
Material Class	EE
Product Specification Level	PSL 3G
Design Validation Level	API 17G 3 rd Edition SSL-Gas (Fully compliant)
Sand Service Class	Sand Class A (Proppant omitted)

PERFORMANCE DATA

Maximum Hydraulic Pressure	10,000 psi (69.0 MPa)
Actuator Volume (Total, Approx.)	0.03 U.S. Gallons (0.1 Litres)
Acceptable Hydraulic Fluid	Any water or oil-based control fluid
Strip Through Capabilities	All typical braided cable and coiled tubing grades.

WEIGHT AND DIMENSIONS

Overall Height (Nominal)	32.205" (818 mm)
Overall Width (Nominal)	18.625" (473 mm)
Gross Dry Weight (Approx.)	1,554 lb (705 kg)

VALVE INTERFACES

Design Standard	API 17G 3 rd Edition.
Upper End Connection	Interventek S5TT Latch Profile
Lower End Connection	Interventek 7.375" Landing String Flange
Hydraulic Interface (Flange)	Hydraulic Ports: 28 off 10,000 psi, 0.25" through ports
	Chemical Injection: 1 off 0.25" below ball, Dual Barrier

FUNCTIONAL CAPACITIES

Maximum Tension @ RWP	440 kip
Maximum Moment @ RWP	134 ft kip
Maximum Tension @ 0 ksi	1,237 kip
Maximum Moment @ 0 ksi	377 ft kip

Note that these values are the limiting values, if GRA is conducted then greater localized values may be available

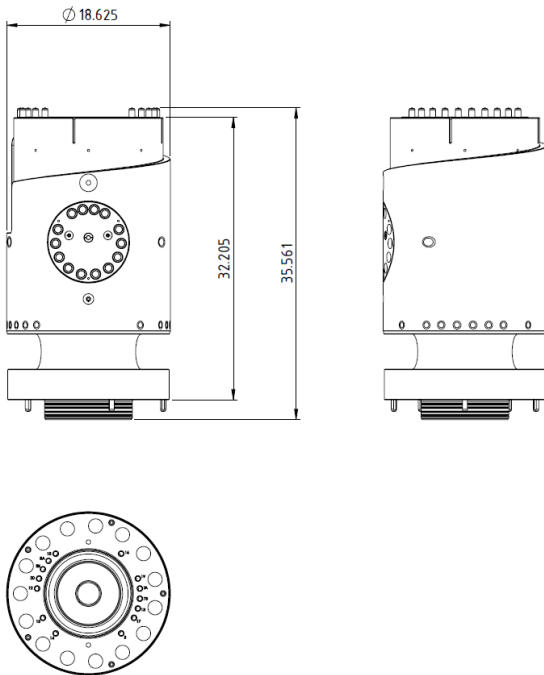
VALIDATION LEVEL

Service Specification Level	API 17G SSL-Gas
Temperature Class (Operational)	27°F to 250°F / -3°C to +121°C
Design Water Depth (Max)	10,000 ft (3,048 m)

NOTES

Structural validation testing fully compliant with API 17G 3rd Edition – Annex E
Validation testing of valve is fully compliant with API 17G 3rd Edition – Annex G

PRODUCT LAYOUT DRAWING



The information in this document is uncontrolled and subject to change without notice.

CONTACT US: Interventek Subsea Engineering Ltd.

Unit 4 International View, ABZ Business Park, Dyce, ABERDEEN AB21 0BJ

  +44 (0)1224 518 509 enquiries@interventek.com www.interventek.com

