

# **Ultra efficient Ultra lightweight Ultra cost-competitive**

Taking LWI operations to the next level.



## **Ultra-Lightweight Intervention System**

Interventek has developed a new ultra-lightweight and compact open-water intervention system (ULWIS), which has been designed to minimise the stress applied to aging subsea Xmas Trees and wellhead infrastructure during operations.

The ULWIS is especially suited to reducing the costs associated with well abandonment campaigns by providing operational and deployment flexibility, time-savings from ease of handling and reduced cost of ownership.

# Ultra-Lightweight Intervention System

## Ease of Deployment

In its conventional EDP/LRP configuration the ULWIS utilises a 4-valve arrangement comprising an upper bi-directional ball retainer valve, latch, dual shear and seal valve block and lower bi-directional ball valve.

The entire assembly weighs in at a mere 8T (approx. 10T with control interfaces and frame) and an overall length of less than 3.5m. The frame is 1.6m square, conveniently deployable through the rotary table of a rig and most vessel moonpools. Stacking the system in the derrick of a rig is an option and mobilisation and storage can be achieved using a conventional shipping basket.

## Applications

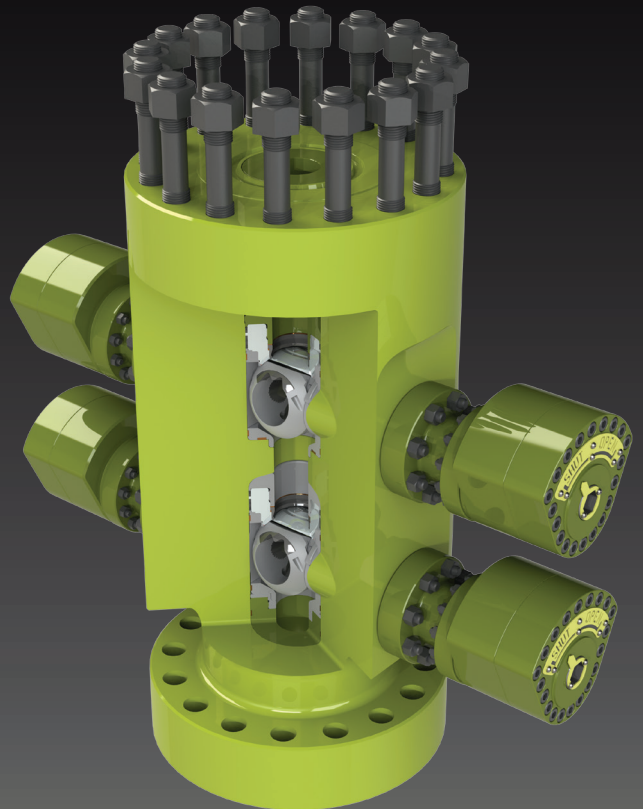
Interventek's unique Revolution valve and actuator design enables the compact and lightweight attributes of the system as well as unrivalled versatility for different well types and applications.

As well as being eminently suited to oil and gas well abandonment operations due to its lightweight nature and its cost and efficiency savings, the system also offers a robust solution for intervening in subsea carbon capture wells. The ULWIS can be built from exotic materials that are resistant to extreme well conditions at a highly competitive price.

## Track Record

Interventek's advanced Revolution safety valve technology and subsea well entry systems support a wide range of operations across the full lifecycle of the well. From exploration, appraisal, development, completion and intervention through to decommissioning, our fast-acting, fit-for-purpose solutions will improve project economics, safety and efficiency.

Our in-riser and open-water well entry solutions provide scalability, flexibility and modular simplicity. They have a strong track record, having supported projects for major international operators and service companies around the world and are API 17G compliant.



Decom



CCUS